



GOOD MORNING

Have Good Trading Day

WEDNESDAY



Price is what you pay.  
Value is what you get.

- Warren Buffet

## MARKET PLUSE

### INDIAN INDICES

| NAME   | CMP   | NET CH. | %     |
|--------|-------|---------|-------|
| SENSEX | 25778 | +161    | +0.63 |
| NIFTY  | 7843  | +47     | +0.61 |

### INDIAN ADR'S

| SYMBOL    | CLOSE | GAIN/ LOSS % |
|-----------|-------|--------------|
| DRREDDY   | 61.61 | +0.37        |
| HDFCBANK  | 60.12 | +3.35        |
| ICICIBK   | 8.30  | +1.34        |
| INFY      | 18.05 | +1.18        |
| TATAMOTOR | 21.81 | +0.37        |
| WIPRO     | 12.01 | +3.00        |

### FII AND MF ACTIVITY

| SYMBOL                 | In Crs.  |
|------------------------|----------|
| FIIs Eq (Provisional)  | -1112.59 |
| FIIs Index Future      | -519.406 |
| FIIs Index Options     | 3614.955 |
| FIIs Stock Future      | 134.932  |
| FIIs Stock Options     | 15.866   |
| DII's Eq (Provisional) | 876.20   |

### CURRENCY

|            |             |
|------------|-------------|
| RBI RATE   | 29-SEP-2015 |
| RUPEE - \$ | 66.1843     |
| EURO       | 74.6096     |
| YEN 100    | 55.4200     |
| GBP        | 100.4611    |

## MARKET PLUSE

### GLOBAL INDICES

| NAME      | CMP   | NET CH. | %     |
|-----------|-------|---------|-------|
| DOW       | 16049 | +47     | +0.30 |
| NASDAQ    | 4517  | -26     | -0.59 |
| NIKKEI    | 17243 | +312    | +1.84 |
| HANG SENG | 20789 | +232    | +1.13 |
| SGX NIFTY | 7882  | +31     | +0.39 |

### WORLD COMMODITIES

| FUTURE      | US\$   | CHANGES |
|-------------|--------|---------|
| CRUDE       | 44.77  | -0.46   |
| NATURAL GAS | 2.589  | +0.003  |
| GOLD        | 1124.5 | -2.3    |
| SILVER      | 14.565 | -0.008  |
| COPPER      | 2.2605 | +0.0090 |

### WORLD EVENTS

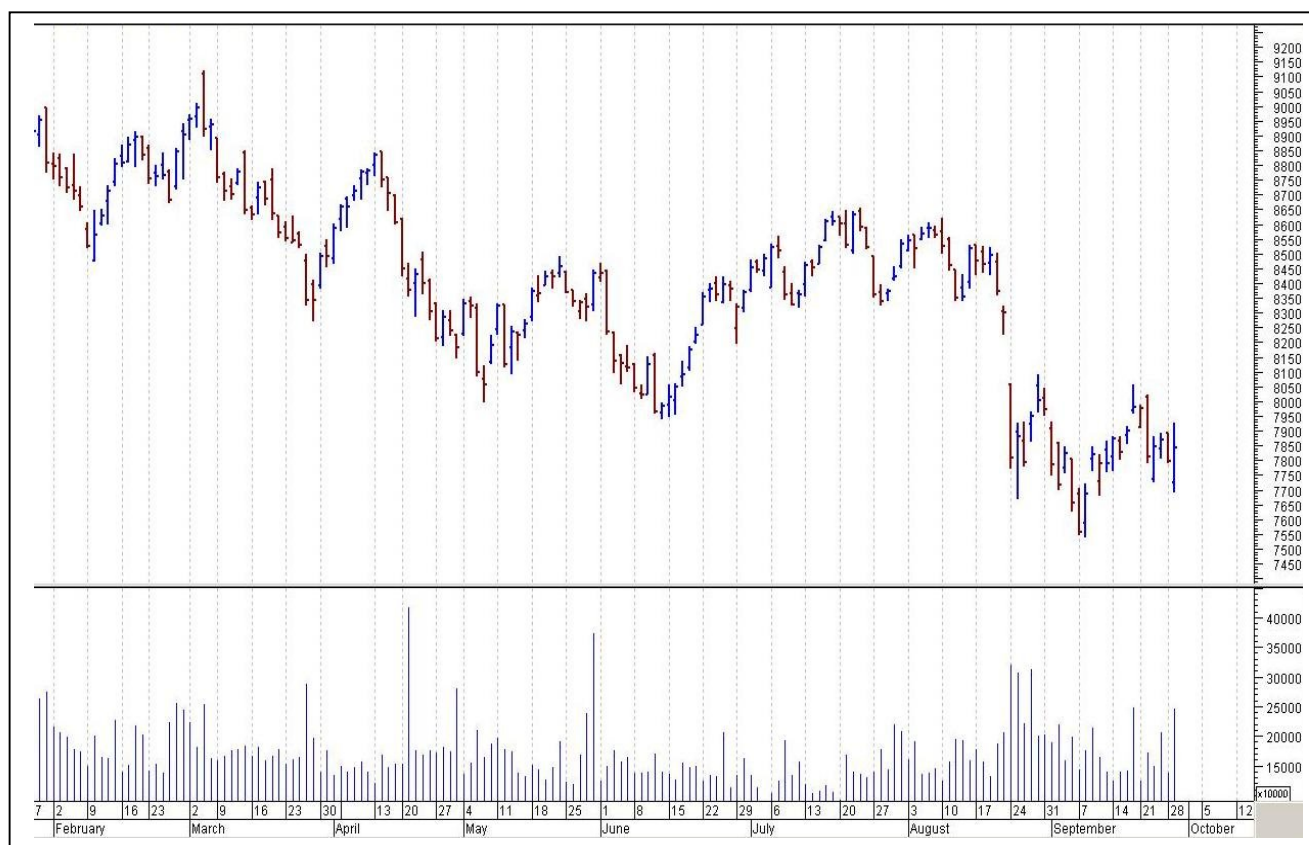
- US: ADP Non-Farm Employment Change
- Crude Oil Inventories
- UK: Current Account
- Final GDP q/q

## TOP STORY

- Sun Pharma Commences Tender Offer For Acquisition Of InSite Vision.
- Blue Star Infotech Sells Its IT Business To Infogain For `180.80 Cr
- Apollo Private Equity Will Sell Remaining 3.6% Stake In Dish TV Via Block Deal On Wednesday.
- S&P Revises Tata Motors' Outlook To Stable From Positive; Rating At BB
- Reliance Jio raises `3500 cr through bonds
- PVR gets nod to raise NCDs worth `500 cr
- Steel Producers Likely To Hike Prices By Up To `1,500/tonne: PTI
- NMDC May Invest `40,000 Cr In 8 Years For Capacity Expansion
- JP Assoc To Consider Selling 49 MW Wind Power Plants today
- RBI Says FIIs/RFPs Can Now Invest Up To 49% In Eveready Industries
- Asian Oilfield Services gets contract worth `13 cr from Jubilant Oil & Gas & GAIL, Tripura



## NIFTY CHART



## MARKET COMMENTARY

Monday's session turned out to be a fabulous day of trade for the Indian equity markets, where frontline gauges garnered gain of over half a percent after Reserve Bank Governor Raghuram Rajan surprised street with a rate cut of 50 basis points. Earlier markets made gap-down start and traded choppy in early deals, tracking weak global cues. But markets witnessed a wild swing to enter into green terrain after Rajan, in his bi-monthly monetary policy announcement, has cut the policy interest rate to a 4-1/2-year low of 6.75 per cent, in a move that, with inflation running at record lows, could help an economy in danger of slowing down. Some support also came with Finance Minister Arun Jaitley's statement that he is confident of maintaining fiscal deficit at 3.9 per cent in the current financial year and extremely keen to better the 7.3 per cent growth of fiscal year 2014-15. For today's trade Nifty likely to trade in the range between 7860 – 7890 in the upper side and 7820 – 7800 in the lower side.

### MARKET LEVELS

|        | CMP  | SUPPORT LEVELS |       |       |       | RESISTANCE LEVELS |       |      |      |
|--------|------|----------------|-------|-------|-------|-------------------|-------|------|------|
| NIFTY  | 7843 | 7820           | 7800  | 7770  | 7750  | 7860              | 7890  | 7910 | 7950 |
| USDINR | 66.3 | 66.23          | 66.12 | 66.07 | 65.95 | 66.4              | 66.54 | 66.6 | 66.7 |



### FUTURES CORNER

| SCRIPS      | CLOSE  | SUPPORT   | TARGET |      | REMARKS      |
|-------------|--------|-----------|--------|------|--------------|
|             |        | STOP LOSS | T1     | T2   |              |
| JINDALSTEEL | 58.75  | 57        | 60.5   | 62   | TRADING CALL |
| COALINDIA   | 316.85 | 312       | 322    | 328  | TRADING CALL |
| BRITANNIA   | 2988   | 2974      | 3004   | 3015 | TRADING CALL |

### EQUITY CORNER

| SCRIPS     | CLOSE  | SUPPORT   | TARGET |     | REMARKS      |
|------------|--------|-----------|--------|-----|--------------|
|            |        | STOP LOSS | T1     | T2  |              |
| JETAIRWAYS | 329.65 | 324       | 338    | 344 | TRADING CALL |
| JKPAPER    | 41.3   | 40        | 44     | 46  | TRADING CALL |

### DELIVERY BASED CALL / INVESTMENT CALL

| SCRIPS | CMP | SUPPORT   | TARGET |    | REMARK |
|--------|-----|-----------|--------|----|--------|
|        |     | STOP LOSS | T1     | T2 |        |
|        |     |           |        |    |        |

### BULK DEALS (BSE)

| SCRIP | CLIENT NAME | BUY/SELL | QUANTITY | PRICE |
|-------|-------------|----------|----------|-------|
| NIL   |             |          |          |       |
|       |             |          |          |       |
|       |             |          |          |       |

### BULK DEALS (NSE)

| SCRIP      | CLIENT NAME  | BUY/SELL | QUANTITY | PRICE  |
|------------|--|----------|----------|--------|
| BFUTILITIE | MANULIFE GLOBAL FUND ASIAN<br>SMALL CAP EQUITY FUND (MLAS) | SELL     | 212085   | 468.64 |
|            |  |          |          |        |
|            |  |          |          |        |

### SCRIP'S IN F&O BAN

(To resume for normal trading below 80% of market wide limit required)

NIL



| NIFTY 50 STOCKS: SUPPORT & RESISTANCE |          |           |           |             |             |             |
|---------------------------------------|----------|-----------|-----------|-------------|-------------|-------------|
| Symbol                                | Close    | Support 1 | Support 2 | Pivot Point | Resistance1 | Resistance2 |
| ACC                                   | 1327.45  | 1304.32   | 1281.18   | 1324.63     | 1347.77     | 1368.08     |
| AMBUJACEM                             | 203.00   | 196.95    | 190.90    | 202.30      | 208.35      | 213.70      |
| ASIANPAINT                            | 804.80   | 786.57    | 768.33    | 798.23      | 816.47      | 828.13      |
| AXISBANK                              | 504.50   | 488.50    | 472.50    | 501.00      | 517.00      | 529.50      |
| BAJAJ-AUTO                            | 2250.65  | 2206.03   | 2161.42   | 2249.62     | 2294.23     | 2337.82     |
| BANKBARODA                            | 187.25   | 181.07    | 174.88    | 185.03      | 191.22      | 195.18      |
| BHARTIARTL                            | 322.65   | 316.57    | 310.48    | 321.68      | 327.77      | 332.88      |
| BHEL                                  | 197.20   | 192.63    | 188.07    | 196.57      | 201.13      | 205.07      |
| BOSCHLTD                              | 19558.50 | 18968.22  | 18377.93  | 19673.08    | 20263.37    | 20968.23    |
| BPCL                                  | 847.80   | 834.00    | 820.20    | 857.00      | 870.80      | 893.80      |
| CAIRN                                 | 145.10   | 143.20    | 141.30    | 145.55      | 147.45      | 149.80      |
| CIPLA                                 | 636.50   | 628.40    | 620.30    | 636.60      | 644.70      | 652.90      |
| COALINDIA                             | 315.40   | 305.07    | 294.73    | 311.13      | 321.47      | 327.53      |
| DRREDDY                               | 4081.45  | 4018.62   | 3955.78   | 4082.83     | 4145.67     | 4209.88     |
| GAIL                                  | 290.90   | 285.87    | 280.83    | 289.53      | 294.57      | 298.23      |
| GRASIM                                | 3440.90  | 3381.00   | 3321.10   | 3440.00     | 3499.90     | 3558.90     |
| HCLTECH                               | 953.70   | 942.30    | 930.90    | 951.40      | 962.80      | 971.90      |
| HDFC                                  | 1216.80  | 1169.22   | 1121.63   | 1200.08     | 1247.67     | 1278.53     |
| HDFCBANK                              | 1064.80  | 1035.30   | 1005.80   | 1054.60     | 1084.10     | 1103.40     |
| HEROMOTOCO                            | 2329.25  | 2297.07   | 2264.88   | 2333.78     | 2365.97     | 2402.68     |
| HINDALCO                              | 68.20    | 67.20     | 66.20     | 68.50       | 69.50       | 70.80       |
| HINDUNILVR                            | 784.35   | 776.80    | 769.25    | 788.90      | 796.45      | 808.55      |
| ICICIBANK                             | 269.00   | 259.35    | 249.70    | 266.00      | 275.65      | 282.30      |
| IDEA                                  | 139.70   | 137.03    | 134.37    | 139.82      | 142.48      | 145.27      |
| INDUSINDBK                            | 941.35   | 909.10    | 876.85    | 933.55      | 965.80      | 990.25      |
| INFY                                  | 1121.85  | 1101.77   | 1081.68   | 1117.58     | 1137.67     | 1153.48     |
| ITC                                   | 320.40   | 316.60    | 312.80    | 320.80      | 324.60      | 328.80      |
| KOTAKBANK                             | 651.50   | 631.33    | 611.17    | 644.17      | 664.33      | 677.17      |
| LT                                    | 1446.25  | 1417.40   | 1388.55   | 1441.20     | 1470.05     | 1493.85     |
| LUPIN                                 | 2015.25  | 1972.93   | 1930.62   | 2005.62     | 2047.93     | 2080.62     |
| M&M                                   | 1249.70  | 1207.83   | 1165.97   | 1243.47     | 1285.33     | 1320.97     |
| MARUTI                                | 4682.30  | 4519.53   | 4356.77   | 4629.77     | 4792.53     | 4902.77     |
| NMDC                                  | 91.30    | 89.18     | 87.07     | 91.22       | 93.33       | 95.37       |
| NTPC                                  | 121.35   | 119.32    | 117.28    | 121.03      | 123.07      | 124.78      |
| ONGC                                  | 226.40   | 220.27    | 214.13    | 223.83      | 229.97      | 233.53      |
| PNB                                   | 135.05   | 131.45    | 127.85    | 134.35      | 137.95      | 140.85      |
| POWERGRID                             | 128.35   | 125.67    | 122.98    | 128.08      | 130.77      | 133.18      |
| RELIANCE                              | 840.75   | 827.82    | 814.88    | 839.03      | 851.97      | 863.18      |
| SBIN                                  | 241.90   | 234.27    | 226.63    | 239.83      | 247.47      | 253.03      |
| SUNPHARMA                             | 848.25   | 838.67    | 829.08    | 849.83      | 859.42      | 870.58      |
| TATAMOTORS                            | 288.75   | 280.30    | 271.85    | 287.55      | 296.00      | 303.25      |
| TATAPOWER                             | 66.05    | 64.33     | 62.62     | 65.32       | 67.03       | 68.02       |
| TATASTEEL                             | 201.40   | 198.50    | 195.60    | 202.60      | 205.50      | 209.60      |
| TCS                                   | 2588.25  | 2560.73   | 2533.22   | 2597.37     | 2624.88     | 2661.52     |
| TECHM                                 | 570.40   | 563.30    | 556.20    | 569.70      | 576.80      | 583.20      |
| ULTRACEMCO                            | 2710.45  | 2634.33   | 2558.22   | 2698.17     | 2774.28     | 2838.12     |
| VEDL                                  | 86.20    | 84.73     | 83.27     | 86.62       | 88.08       | 89.97       |
| WIPRO                                 | 588.30   | 582.90    | 577.50    | 590.40      | 595.80      | 603.30      |
| YESBANK                               | 738.60   | 711.23    | 683.87    | 730.12      | 757.48      | 776.37      |
| ZEEL                                  | 391.10   | 380.90    | 370.70    | 387.20      | 397.40      | 403.70      |



## NEWS & RUMOURS:

- Gold (Spot Dollar) major support = \$1101/\$1074 & Resistance = \$1161/\$1191.
- Crude oil range->\$41 to \$51.
- U.S. Stocks Climb as Biotech's Rebound, Energy Rises with Crude oil: - U.S. stocks advanced, with equities rising from a one-month low, as biotechnology shares rebounded and energy companies advanced with crude oil.
- Glencore Shares Soar After Company Says It's Financially Robust: - Glencore Plc, the commodities group that's lost almost \$50 billion in market value this year, rallied the most ever after the company said it can withstand current market conditions.
- Consumer Confidence Index in U.S. Increased to 103 in September: - The Conference Board's index of consumer confidence increased to 103 in September from 101.3 a month earlier, the New York-based private research group said Tuesday.
- Home Prices in 20 U.S. Cities Increased 5% in Year to July: - Home prices in 20 U.S. cities rose 5 percent in July from the same month in 2014, propelled by improving demand and limited supply.
- Gold futures slump amid U.S. rate hike outlook: - Gold futures edged lower on Tuesday, as expectations for a U.S. rate hike in the coming months continued to weigh on the precious metal.
- Copper sinks to 6-year low on China growth concerns, Glencore: - Copper futures tumbled to the lowest level in more than six years on Tuesday, as concerns over the health of China's economy dampened appetite for the red metal.
- Commodity rout hits traders, emerging markets: - Shares in commodity trading firms took another tumble on Tuesday, driving global stocks to their lowest in more than two years as pressure built on raw materials prices and emerging markets.

## TRENDS & OUTLOOK – DATE: 30-Sep-2015

### PRECIOUS METALS:

| COMMODITY (MCX) | S2    | S1    | PIVOT POINT | R1    | R2    |
|-----------------|-------|-------|-------------|-------|-------|
| GOLD (Oct)      | 25801 | 26100 | 26334       | 26593 | 26827 |
| SILVER (Dec)    | 33100 | 34000 | 35001       | 36300 | 37290 |

### BASE METALS

| COMMODITY (MCX) | S2     | S1     | PIVOT POINT | R1     | R2     |
|-----------------|--------|--------|-------------|--------|--------|
| COPPER (Nov)    | 324    | 327    | 333         | 337    | 342    |
| ZINC (Oct)      | 104.70 | 107.10 | 109.20      | 112.30 | 115.45 |
| LEAD (Oct)      | 105.60 | 107.55 | 110.10      | 112.75 | 115.90 |
| NICKEL (Oct)    | 621    | 636    | 653         | 669    | 691    |

### ENERGY

| COMMODITY (MCX)   | S2   | S1   | PIVOT POINT | R1   | R2   |
|-------------------|------|------|-------------|------|------|
| CRUDE OIL (Oct)   | 2820 | 2901 | 2991        | 3099 | 3175 |
| NATURAL GAS (Oct) | 162  | 168  | 175         | 180  | 185  |

### DATE TALKS : TODAY'S ECONOMIC DATA :

BOE Gov Carney Speaks, FOMC Member Dudley Speaks, ADP Non-Farm Employment Change, Chicago PMI, Crude Oil Inventories.



Registered Office

Indira House, 3rd Floor, 5 Topiwala Lane,  
Opp. Lemington Road Police Station, Grant Road (East), Mumbai - 400007.

Corporate Office

'Ramavat House' E-15, Saket Nagar, Indore - 452018 (M.P.)

Customer Care

Tel: +91-731-4097170/ 71/ 72/ 73/ 74 M. +91 93031 72345

Email: [customercare@indiratrade.com](mailto:customercare@indiratrade.com) [www.indiratrade.com](http://www.indiratrade.com)



INSTITUTIONAL DEALING UNIT

Africa House, 5, Topiwalla Lane, Lamington Road, Mumbai, 400007

Tel: +91 22 30080678 Fax : +91 22 23870767 Email : [ie@indiratrade.com](mailto:ie@indiratrade.com)

**Disclaimer**

This report is for private circulation within the Indira Group. This report is strictly confidential and for information of the selected recipient only and may not be altered in any way, transmitted to, copied or distributed, in part or in whole, to any other person or to the media or reproduced in any form. This report should not be construed as an offer or solicitation to buy or sell any securities or any interest in securities. It does not constitute a personal recommendation or take into account the particular investment objectives, financial situations, or any such factor. The information, opinions estimates and forecasts contained here have been obtained from, or are based upon, sources we believe to be reliable, but no representation of warranty, express or implied, is made by us to their accuracy or completeness. Opinions expressed are our current opinions as of the date appearing on this material only and are subject to change without notice.